

Quadra St between Tattersal Dr and Union Rd

October 28, 2019 To November 01, 2019



The data presented here is for information purposes only and should not be considered authoritative for construction, geotechnical, engineering, navigational, legal, or other site-specific uses. The information shared is owned by the Transportation Division of the Engineering Department at the District of Saanich. Accuracy is not guaranteed.

Start Date: 28-Oct-19
 Start Time: 0:00
 Station ID: M0027-05

Location 1: Quadra St between Tattersal Dr and Union Rd

Note:

DATE:	October 28, 2019		October 29, 2019		October 30, 2019		October 31, 2019		November 1, 2019		WK AVG		WK AVG	HOURLY
	MON		TUE		WED		THURS		FRI		NB	SB	CH 1+2	%
Time:	NB	SB	NB	SB	NB	SB	NB	SB	NB	SB	NB	SB		
12-1 AM			38	35	47	31	39	30			41	32	73	0.4%
1-2 AM			24	17	19	14	26	22			23	18	41	0.2%
2-3 AM			10	12	20	14	16	11			15	12	28	0.2%
3-4 AM			8	9	14	11	14	10			12	10	22	0.1%
4-5 AM			16	11	17	10	22	16			18	12	31	0.2%
5-6 AM			46	65	40	58	41	63			42	62	104	0.6%
6-7 AM			124	185	125	199	135	202			128	195	323	1.9%
7-8 AM			371	493	383	518	355	517			370	509	879	5.2%
8-9 AM			512	768	500	766	545	810			519	781	1300	7.6%
9-10 AM			476	545	470	551	470	483			472	526	998	5.9%
10-11 AM			443	538	449	499	514	554			469	530	999	5.9%
11-12 PM			523	599	521	587	501	608			515	598	1113	6.5%
12-1 PM			519	583	557	568	551	583			542	578	1120	6.6%
1-2 PM			552	543	617	515	579	578			583	545	1128	6.6%
2-3 PM			660	575	634	605	611	595			635	592	1227	7.2%
3-4 PM			773	691	779	679	763	497			772	622	1394	8.2%
4-5 PM			875	682	873	702	916	626			888	670	1558	9.2%
5-6 PM			839	578	805	655	831	541			825	591	1416	8.3%
6-7 PM			558	464	486	479	439	408			494	450	945	5.6%
7-8 PM			351	371	379	342	321	311			350	341	692	4.1%
8-9 PM			268	266	318	265	286	313			291	281	572	3.4%
9-10 PM			284	212	331	237	251	238			289	229	518	3.0%
10-11 PM			157	119	176	164	201	180			178	154	332	2.0%
11-12 AM			88	77	106	83	144	110			113	90	203	1.2%
LANES			8515	8438	8666	8552	8571	8306			8584	8432	17016	100.0%
TOTAL			16953		17218		16877				17020			
	MON		TUE		WED		THURS		FRI		WK AVG			

PEAK HOUR					TOTAL VEHICALS-PEAK PERIODS		2 HOUR PEAK INTERVALS				
MAX. 7 - 9 am PEAK HOUR	1300	⇒	7.6%	between 8-9 AM	7387	⇒	6 HR TOTAL	2 HR AM (7 - 9 AM)			
MAX. 7 - 11 am PEAK HOUR	1300	⇒	7.6%	between 8-9 AM	5154	⇒	4 HR TOTAL	VEH / HR	VEH / 2HR	2 HR %	
								7-8 AM	879	2179	12.8%
								8-9 AM	1300		
MAX. 11 am - 1 pm PEAK HOUR	1120	⇒	6.6%	between 12-1 PM	24 HOUR FACTORS						
MAX. 11 am - 3 pm PEAK HOUR	1227	⇒	7.2%	between 2-3 PM							
MAX. 4 - 6 pm PEAK HOUR	1558	⇒	9.2%	between 4-5 PM							
MAX. 3 - 6 pm PEAK HOUR	1558	⇒	9.2%	between 4-5 PM	2.30	⇒	6-24 HR FACT.	2 HR NOON (11 - 1 PM)			
					3.30	⇒	4-24 HR FACT.	VEH / HR	VEH / 2HR	2 HR %	
								11-12 PM	1113	2233	13.1%
								12-1 PM	1120		
								2 HR PM (4 - 6 PM)			
								VEH / HR	VEH / 2HR	2 HR %	
								4-5 PM	1558	2974	17.5%
								5-6 PM	1416		

Quadra St between Tattersal Dr and Union Rd

Northbound

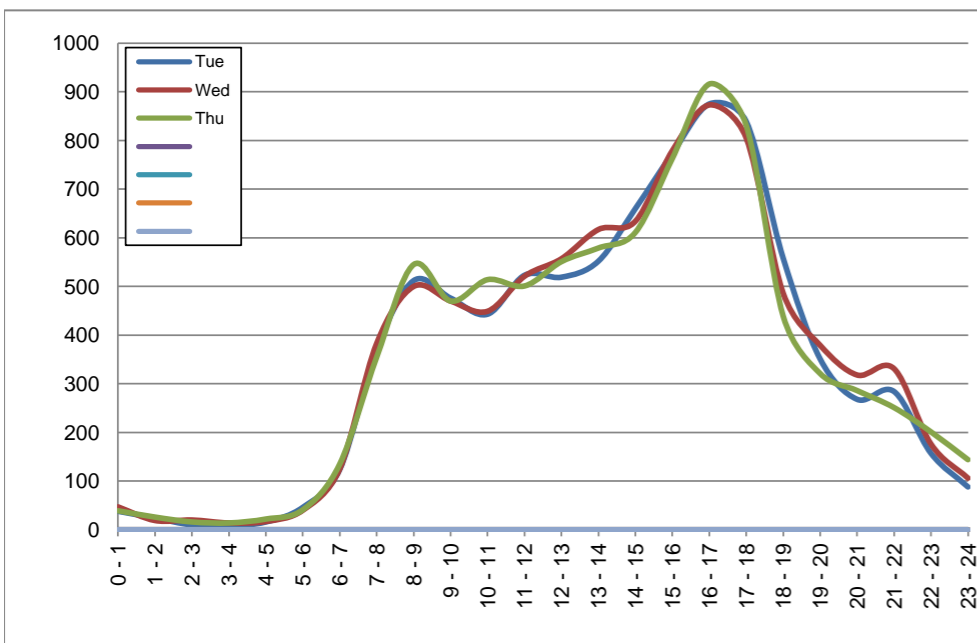
October 29, 2019 to October 31, 2019

Hourly Volumes

Time Period	Tue	Wed	Thu				
	Oct 29	Oct 30	Oct 31				
0 - 1	38	47	39				
1 - 2	24	19	26				
2 - 3	10	20	16				
3 - 4	8	14	14				
4 - 5	16	17	22				
5 - 6	46	40	41				
6 - 7	124	125	135				
7 - 8	371	383	355				
8 - 9	512	500	545				
9 - 10	476	470	470				
10 - 11	443	449	514				
11 - 12	523	521	501				
12 - 13	519	557	551				
13 - 14	552	617	579				
14 - 15	660	634	611				
15 - 16	773	779	763				
16 - 17	875	873	916				
17 - 18	839	805	831				
18 - 19	558	486	439				
19 - 20	351	379	321				
20 - 21	268	318	286				
21 - 22	284	331	251				
22 - 23	157	176	201				
23 - 24	88	106	144				
Day Total	8515	8666	8571				

15-Minute Volumes

Time Start	Tue	Wed	Thu				
	Oct 29	Oct 30	Oct 31				
0:00	13	17	8				
0:15	13	17	15				
0:30	6	4	10				
0:45	6	9	6				
1:00	6	7	5				
1:15	5	3	10				
1:30	8	4	6				
1:45	5	5	5				
2:00	1	4	6				
2:15	4	6	3				
2:30	4	5	4				
2:45	1	5	3				
3:00	2	2	2				
3:15	3	3	5				
3:30	1	6	3				
3:45	2	3	4				
4:00	2	3	3				
4:15	1	3	4				
4:30	8	4	7				
4:45	5	7	8				
5:00	4	7	6				
5:15	11	5	9				
5:30	16	11	11				
5:45	15	17	15				
6:00	19	20	19				
6:15	25	25	24				
6:30	27	27	37				
6:45	53	53	55				
7:00	80	73	61				
7:15	77	72	77				
7:30	92	101	90				
7:45	122	137	127				
8:00	134	109	150				
8:15	143	123	144				
8:30	111	126	119				
8:45	124	142	132				
9:00	111	124	128				
9:15	126	102	103				
9:30	106	122	117				
9:45	133	122	122				
10:00	100	116	124				
10:15	130	115	128				
10:30	107	119	124				
10:45	106	99	138				
11:00	126	129	102				
11:15	133	135	120				
11:30	121	133	135				
11:45	143	124	144				
12:00	131	140	152				
12:15	129	139	147				
12:30	136	124	125				
12:45	123	154	127				
13:00	131	170	134				
13:15	150	153	147				
13:30	136	129	148				
13:45	135	165	150				
14:00	168	153	148				
14:15	171	165	170				
14:30	153	164	152				
14:45	168	152	141				
15:00	189	200	207				
15:15	190	202	166				
15:30	204	175	195				
15:45	190	202	195				
16:00	197	192	230				
16:15	218	221	215				
16:30	239	225	235				
16:45	221	235	236				
17:00	243	227	245				
17:15	244	216	244				
17:30	208	194	217				
17:45	144	168	125				
18:00	165	126	139				
18:15	146	135	117				
18:30	142	101	87				
18:45	105	124	96				
19:00	89	108	96				
19:15	88	96	70				
19:30	103	99	76				
19:45	71	76	79				
20:00	70	103	79				
20:15	55	78	59				
20:30	73	73	63				
20:45	70	64	85				
21:00	72	88	71				
21:15	60	79	66				
21:30	62	105	62				
21:45	90	59	52				
22:00	50	46	52				
22:15	52	53	48				
22:30	26	43	54				
22:45	29	34	47				
23:00	31	36	44				
23:15	23	26	34				
23:30	19	27	35				
23:45	15	17	31				



Site notes:

Quadra St between Tattersal Dr and Union Rd

Southbound

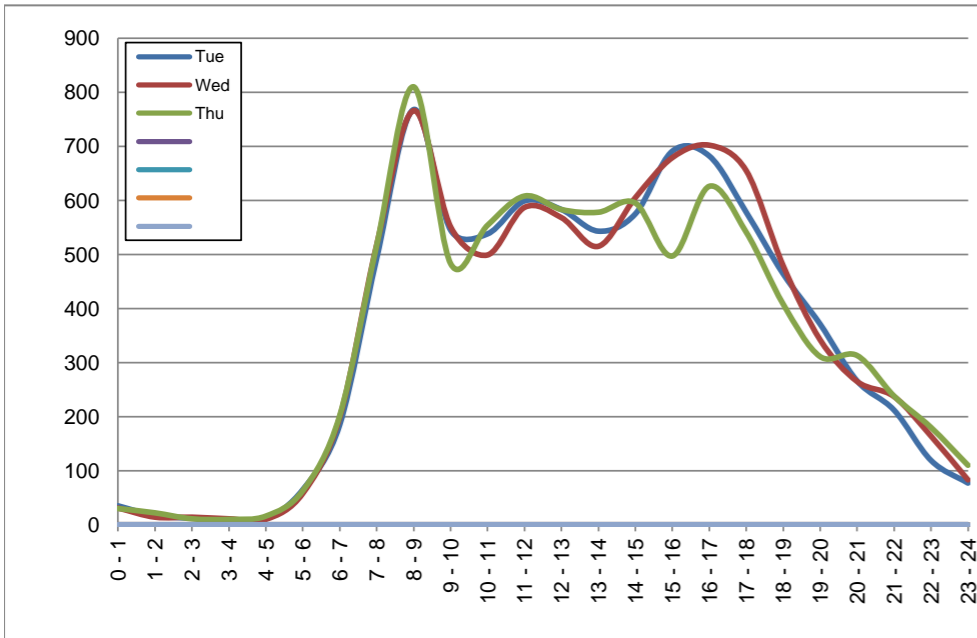
October 29, 2019 to October 31, 2019

Hourly Volumes

Time Period	Tue	Wed	Thu				
	Oct 29	Oct 30	Oct 31				
0 - 1	35	31	30				
1 - 2	17	14	22				
2 - 3	12	14	11				
3 - 4	9	11	10				
4 - 5	11	10	16				
5 - 6	65	58	63				
6 - 7	185	199	202				
7 - 8	493	518	517				
8 - 9	768	766	810				
9 - 10	545	551	483				
10 - 11	538	499	554				
11 - 12	599	587	608				
12 - 13	583	568	583				
13 - 14	543	515	578				
14 - 15	575	605	595				
15 - 16	691	679	497				
16 - 17	682	702	626				
17 - 18	578	655	541				
18 - 19	464	479	408				
19 - 20	371	342	311				
20 - 21	266	265	313				
21 - 22	212	237	238				
22 - 23	119	164	180				
23 - 24	77	83	110				
Day Total	8438	8552	8306				

15-Minute Volumes

Time Start	Tue	Wed	Thu				
	Oct 29	Oct 30	Oct 31				
0:00	8	10	12				
0:15	14	8	9				
0:30	8	4	3				
0:45	5	9	6				
1:00	5	3	7				
1:15	8	5	2				
1:30	3	4	7				
1:45	1	2	6				
2:00	2	5	3				
2:15	4	4	3				
2:30	0	3	3				
2:45	6	2	2				
3:00	1	0	5				
3:15	3	2	1				
3:30	3	4	2				
3:45	2	5	2				
4:00	3	0	3				
4:15	2	4	2				
4:30	2	3	6				
4:45	4	3	5				
5:00	7	7	8				
5:15	16	9	9				
5:30	14	19	23				
5:45	28	23	23				
6:00	23	28	38				
6:15	41	36	40				
6:30	56	60	60				
6:45	65	75	64				
7:00	69	72	93				
7:15	105	117	112				
7:30	158	136	141				
7:45	161	193	171				
8:00	187	175	187				
8:15	233	218	220				
8:30	186	192	215				
8:45	162	181	188				
9:00	133	137	117				
9:15	128	145	138				
9:30	128	132	117				
9:45	156	137	111				
10:00	119	110	125				
10:15	133	117	138				
10:30	128	141	126				
10:45	158	131	165				
11:00	142	140	150				
11:15	150	128	144				
11:30	158	163	154				
11:45	149	156	160				
12:00	130	138	164				
12:15	144	130	139				
12:30	154	148	126				
12:45	155	152	154				
13:00	136	125	156				
13:15	129	128	141				
13:30	148	138	140				
13:45	130	124	141				
14:00	148	157	140				
14:15	134	121	146				
14:30	148	174	148				
14:45	145	153	161				
15:00	158	187	140				
15:15	209	173	94				
15:30	169	167	80				
15:45	155	152	183				
16:00	174	167	154				
16:15	159	188	150				
16:30	178	186	169				
16:45	171	161	153				
17:00	151	188	162				
17:15	155	157	137				
17:30	157	152	116				
17:45	115	158	126				
18:00	123	133	120				
18:15	132	127	100				
18:30	106	112	98				
18:45	103	107	90				
19:00	111	102	97				
19:15	100	102	73				
19:30	85	67	81				
19:45	75	71	60				
20:00	74	78	67				
20:15	75	70	84				
20:30	42	56	92				
20:45	75	61	70				
21:00	58	70	66				
21:15	52	50	68				
21:30	57	63	57				
21:45	45	54	47				
22:00	34	52	54				
22:15	26	41	54				
22:30	35	36	38				
22:45	24	35	34				
23:00	27	36	36				
23:15	20	18	24				
23:30	17	20	23				
23:45	13	9	27				



Site notes:

Vehicle Speed Summary

Saanich Engineering Department

Count Id: [M0027-05](#)

Filename: [Quadra St between Tattersal Dr and Union Rd-Oct-2019.xlsm](#)

Location: Quadra St between Tattersal Dr and Union Rd

Note:

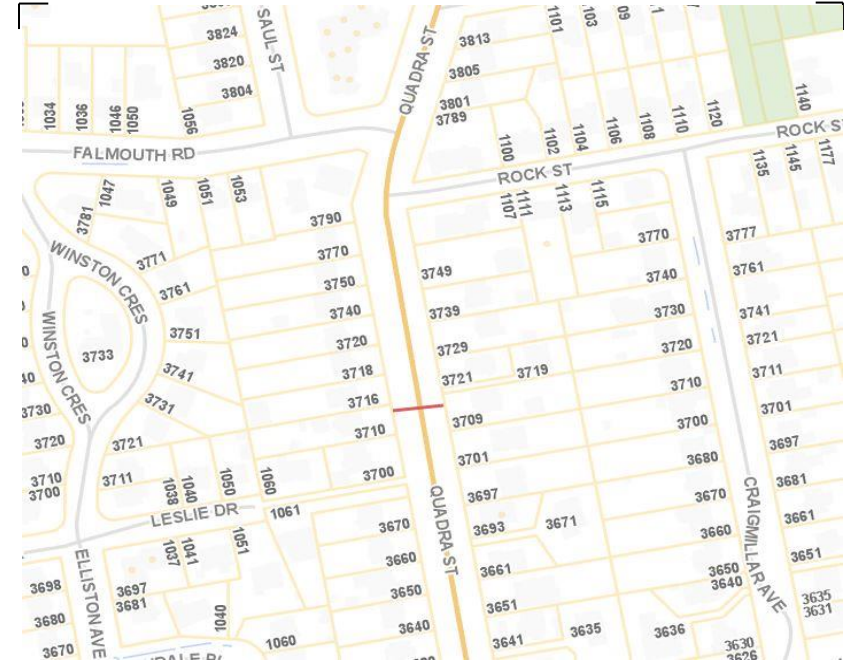
Direction: **North-South**

Dates: **October 28, 2019 To November 01, 2019**

Filtered data

AVG. SPEED	33 mph	53 km/h
50 % SPEED	33 mph	53 km/h
85 % SPEED	37 mph	60 km/h
95 % SPEED	40 mph	65 km/h

Location Map



Quadra St between Tattersal Dr and Union Rd

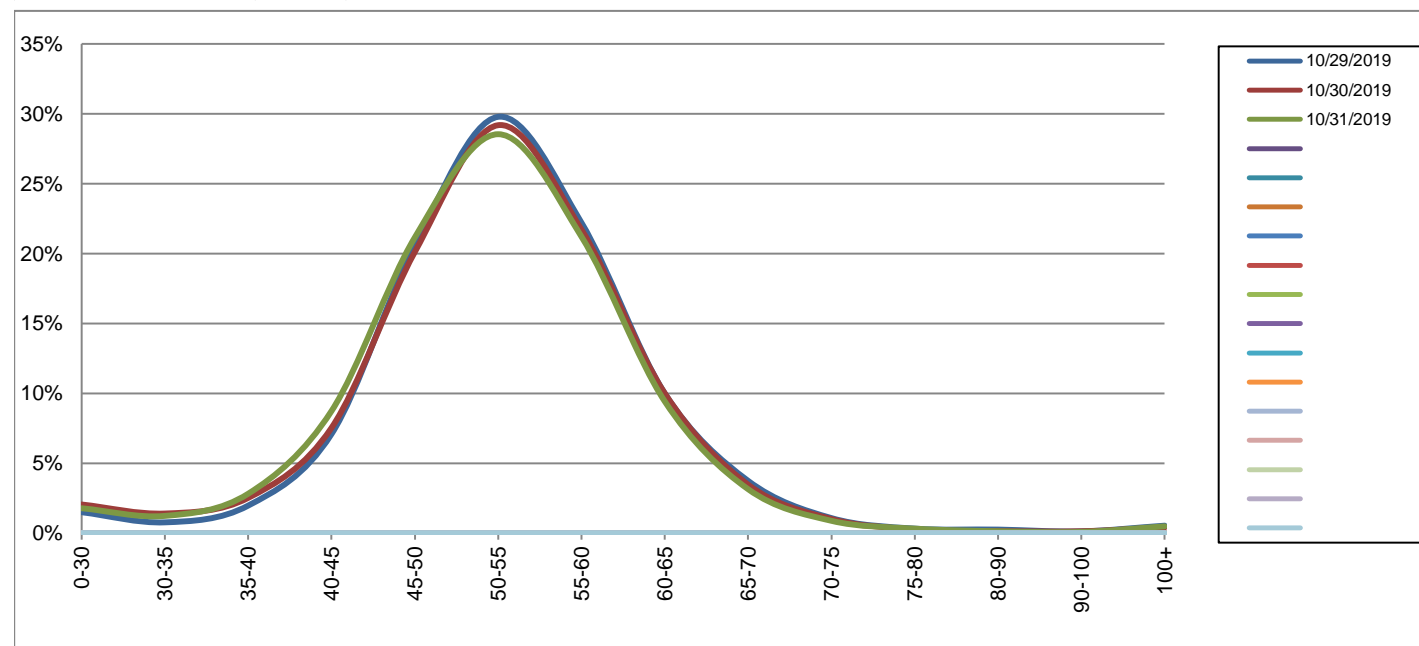
Northbound

October 29, 2019 to October 31, 2019

Daily Speed Bin Percentages															Daily Speed Bin Volumes														Total	Avg.
Bin #	1	2	3	4	5	6	7	8	9	10	11	12	13	14	1	2	3	4	5	6	7	8	9	10	11	12	13	14	Volume	Speed
Bin Speeds	0-30	30-35	35-40	40-45	45-50	50-55	55-60	60-65	65-70	70-75	75-80	80-90	90-100	100+	0-30	30-35	35-40	40-45	45-50	50-55	55-60	60-65	65-70	70-75	75-80	80-90	90-100	100+		
10/29/2019	1.5%	0.8%	2.0%	7.1%	20.6%	29.8%	22.2%	10.0%	3.7%	1.1%	0.3%	0.3%	0.1%	0.5%	128	66	168	604	1753	2536	1891	851	319	92	28	22	11	46	8515	53
10/30/2019	2.1%	1.4%	2.5%	7.5%	20.1%	29.2%	21.7%	10.0%	3.5%	1.0%	0.3%	0.2%	0.1%	0.4%	178	122	219	653	1743	2529	1882	867	301	88	23	13	12	36	8666	53
10/31/2019	1.8%	1.2%	2.8%	8.7%	21.2%	28.5%	21.2%	9.4%	3.2%	0.9%	0.3%	0.1%	0.1%	0.5%	153	106	242	749	1813	2446	1818	808	270	76	28	12	8	42	8571	52
Total	1.8%	1.1%	2.4%	7.8%	20.6%	29.2%	21.7%	9.8%	3.5%	1.0%	0.3%	0.2%	0.1%	0.5%	459	294	629	2006	5309	7511	5591	2526	890	256	79	47	31	124	25752	53

Speed Data Summary

Bin #	1	2	3	4	5	6	7	8	9	10	11	12	13	14	Total
Bin Speeds	0-30	30-35	35-40	40-45	45-50	50-55	55-60	60-65	65-70	70-75	75-80	80-90	90-100	100+	
Survey Total	459	294	629	2006	5309	7511	5591	2526	890	256	79	47	31	124	25752
% Total	1.8%	1.1%	2.4%	7.8%	20.6%	29.2%	21.7%	9.8%	3.5%	1.0%	0.3%	0.2%	0.1%	0.5%	100%
Accumulated %	1.8%	2.9%	5.4%	13.2%	33.8%	62.9%	84.6%	94.5%	97.9%	98.9%	99.2%	99.4%	99.5%	100%	
Inverse Accum. %	98.2%	97.1%	94.6%	86.8%	66.2%	37.1%	15.4%	5.5%	2.1%	1.1%	0.8%	0.6%	0.5%	0.0%	
Average Speed	53 KM/H														



Site notes:

Quadra St between Tattersal Dr and Union Rd

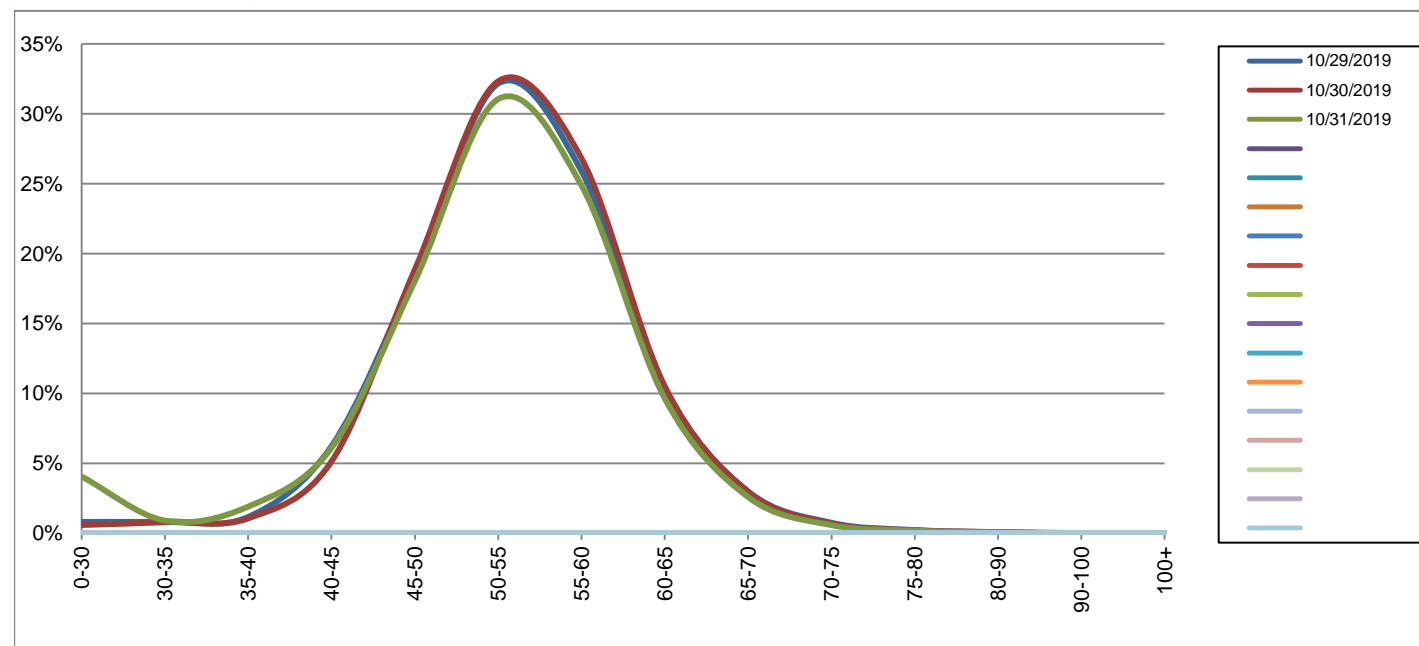
Southbound

October 29, 2019 to October 31, 2019

Daily Speed Bin Percentages															Daily Speed Bin Volumes														Total	Avg.
Bin #	1	2	3	4	5	6	7	8	9	10	11	12	13	14	1	2	3	4	5	6	7	8	9	10	11	12	13	14	Volume	Speed
Bin Speeds	0-30	30-35	35-40	40-45	45-50	50-55	55-60	60-65	65-70	70-75	75-80	80-90	90-100	100+	0-30	30-35	35-40	40-45	45-50	50-55	55-60	60-65	65-70	70-75	75-80	80-90	90-100	100+		
10/29/2019	0.8%	0.8%	1.2%	6.2%	18.5%	32.2%	25.9%	10.4%	3.0%	0.7%	0.2%	0.1%	0.0%	0.0%	68	71	98	525	1563	2713	2185	875	252	63	19	6	0	0	8438	53
10/30/2019	0.6%	0.8%	1.1%	5.1%	18.8%	32.3%	26.8%	10.5%	3.0%	0.7%	0.2%	0.1%	0.0%	0.0%	50	67	91	439	1612	2764	2293	898	254	58	18	7	1	0	8552	54
10/31/2019	4.1%	0.9%	1.9%	6.1%	18.0%	31.0%	24.9%	9.6%	2.6%	0.6%	0.2%	0.1%	0.0%	0.0%	337	75	158	507	1498	2579	2066	800	215	48	15	5	1	2	8306	52
Total	1.8%	0.8%	1.4%	5.8%	18.5%	31.8%	25.9%	10.2%	2.9%	0.7%	0.2%	0.1%	0.0%	0.0%	455	213	347	1471	4673	8056	6544	2573	721	169	52	18	2	2	25296	53

Speed Data Summary

Bin #	1	2	3	4	5	6	7	8	9	10	11	12	13	14	Total
Bin Speeds	0-30	30-35	35-40	40-45	45-50	50-55	55-60	60-65	65-70	70-75	75-80	80-90	90-100	100+	
Survey Total	455	213	347	1471	4673	8056	6544	2573	721	169	52	18	2	2	25296
% Total	1.8%	0.8%	1.4%	5.8%	18.5%	31.8%	25.9%	10.2%	2.9%	0.7%	0.2%	0.1%	0.0%	0.0%	100%
Accumulated %	1.8%	2.6%	4.0%	9.8%	28.3%	60.1%	86.0%	96.2%	99.0%	99.7%	99.9%	100.0%	100.0%	100%	
Inverse Accum. %	98.2%	97.4%	96.0%	90.2%	71.7%	39.9%	14.0%	3.8%	1.0%	0.3%	0.1%	0.0%	0.0%	0.0%	
Average Speed	53 KM/H														



Site notes:

Quadra St between Tattersal Dr and Union Rd

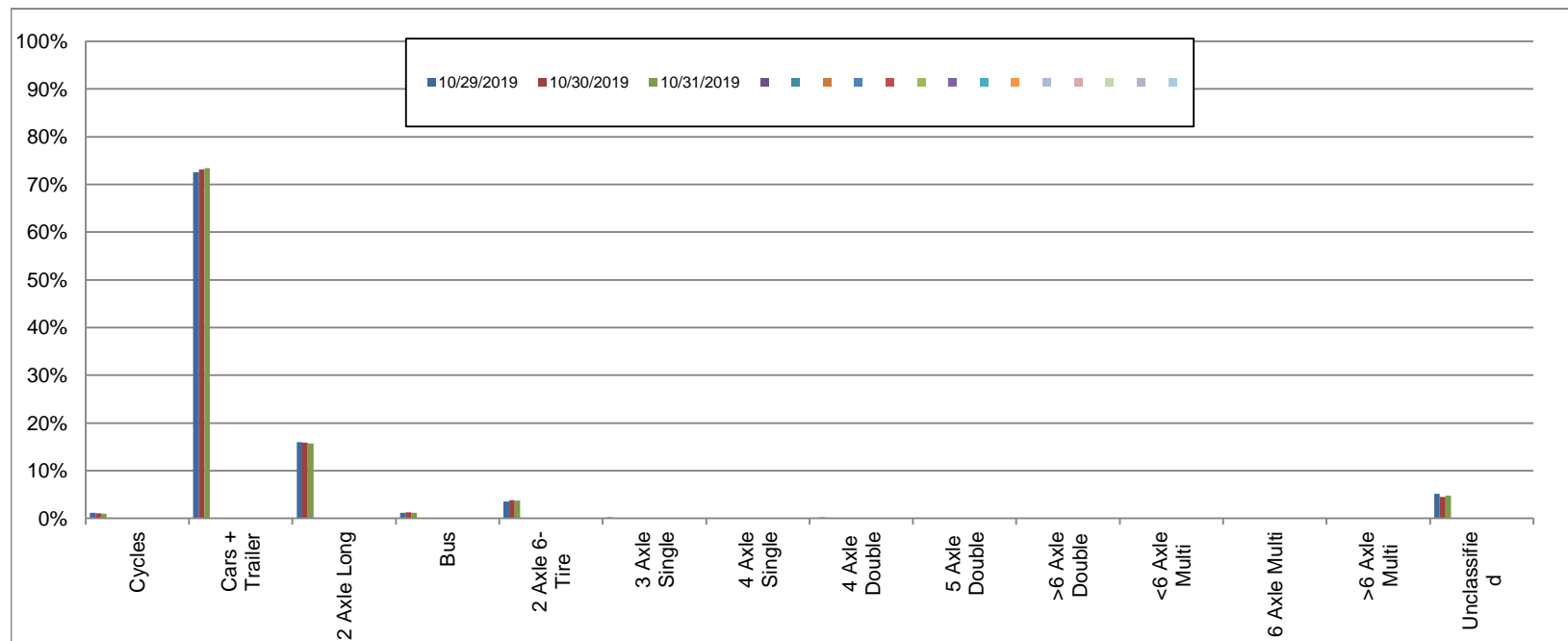
Northbound

October 29, 2019 to October 31, 2019

Daily Class Bin Percentages															Daily Class Bin Volumes														
Bin #	1	2	3	4	5	6	7	8	9	10	11	12	13	14	1	2	3	4	5	6	7	8	9	10	11	12	13	14	Total Volume
Bin Class	Cycles	Cars + Trailer	2 Axle Long	Bus	2 Axle 6-Tire	3 Axle Single	4 Axle Single	4 Axle Double	5 Axle Double	>6 Axle Double	<6 Axle Multi	6 Axle Multi	>6 Axle Multi	Unclassified	Cycles	Cars + Trailer	2 Axle Long	Bus	2 Axle 6-Tire	3 Axle Single	4 Axle Single	4 Axle Double	5 Axle Double	>6 Axle Double	<6 Axle Multi	6 Axle Multi	>6 Axle Multi	Unclassified	
10/29/2019	1.2%	72.6%	16.0%	1.2%	3.6%	0.2%	0.0%	0.1%	0.0%	0.0%	0.0%	0.0%	0.0%	5.1%	101	6179	1360	100	304	18	2	11	3	0	0	0	0	437	8515
10/30/2019	1.1%	73.2%	15.9%	1.2%	3.8%	0.1%	0.0%	0.2%	0.0%	0.0%	0.0%	0.0%	0.0%	4.4%	91	6342	1379	107	332	9	1	14	4	2	0	0	0	385	8666
10/31/2019	1.0%	73.5%	15.7%	1.1%	3.7%	0.1%	0.0%	0.1%	0.0%	0.0%	0.0%	0.0%	0.0%	4.8%	83	6296	1344	95	316	10	1	9	4	1	0	0	0	412	8571
Total	1.1%	73.1%	15.9%	1.2%	3.7%	0.1%	0.0%	0.1%	0.0%	0.0%	0.0%	0.0%	0.0%	4.8%	275	18817	4083	302	952	37	4	34	11	3	0	0	0	1234	25752

Class Data Summary

Bin #	1	2	3	4	5	6	7	8	9	10	11	12	13	14	Total Volume
Bin Class	Cycles	Cars + Trailer	2 Axle Long	Bus	2 Axle 6-Tire	3 Axle Single	4 Axle Single	4 Axle Double	5 Axle Double	>6 Axle Double	<6 Axle Multi	6 Axle Multi	>6 Axle Multi	Unclassified	Total Volume
Survey Total	275	18817	4083	302	952	37	4	34	11	3	0	0	0	1234	25752
% Total	1.1%	73.1%	15.9%	1.2%	3.7%	0.1%	0.0%	0.1%	0.0%	0.0%	0.0%	0.0%	0.0%	4.8%	100%
Accumulated %	1.1%	74.1%	90.0%	91.2%	94.9%	95.0%	95.0%	95.2%	95.2%	95.2%	95.2%	95.2%	95.2%	100.0%	
Inv. Accum. %	98.9%	25.9%	10.0%	8.8%	5.1%	5.0%	5.0%	4.8%	4.8%	4.8%	4.8%	4.8%	4.8%	0.0%	



Classification Descriptions

Bin #	Bin Description
1	Motorcycles
2	Passenger cars, including those with recreational trailers
3	2-axle pick-ups, vans, and RVs, including those with recreational trailers
4	Buses
5	2-axle, 6-tire single units
6	3-axle single units
7	4-axle single units
8	3-axle or 4-axle double unit
9	5-axle double unit
10	6-, 7-, or 8-axle double unit
11	5-axle multiple unit
12	6-axle multiple unit
13	7-or-more-axle multiple unit
14	Vehicles that could not be classified

Site notes:

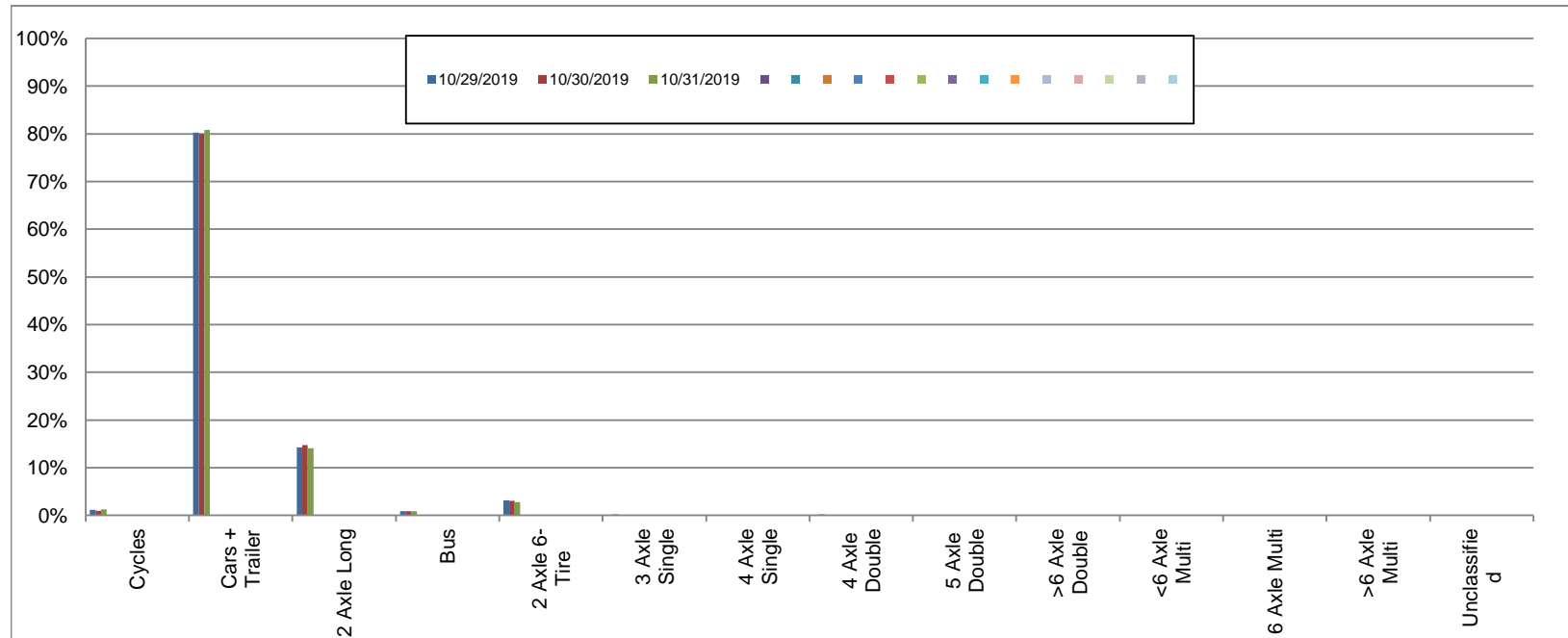
Quadra St between Tattersal Dr and Union Rd

Southbound
October 29, 2019 to October 31, 2019

Daily Class Bin Percentages															Daily Class Bin Volumes											Total Volume			
Bin #	1	2	3	4	5	6	7	8	9	10	11	12	13	14	1	2	3	4	5	6	7	8	9	10	11		12	13	14
Bin Class	Cycles	Cars + Trailer	2 Axle Long	Bus	2 Axle 6-Tire	3 Axle Single	4 Axle Single	4 Axle Double	5 Axle Double	>6 Axle Double	<6 Axle Multi	6 Axle Multi	>6 Axle Multi	Unclassified	Cycles	Cars + Trailer	2 Axle Long	Bus	2 Axle 6-Tire	3 Axle Single	4 Axle Single	4 Axle Double	5 Axle Double	>6 Axle Double	<6 Axle Multi	6 Axle Multi	>6 Axle Multi	Unclassified	
10/29/2019	1.1%	80.3%	14.2%	0.9%	3.2%	0.1%	0.0%	0.1%	0.0%	0.0%	0.0%	0.0%	0.0%	0.0%	95	6773	1200	73	269	9	1	8	1	4	0	0	1	4	8438
10/30/2019	1.0%	80.0%	14.7%	0.8%	3.1%	0.2%	0.0%	0.2%	0.1%	0.0%	0.0%	0.0%	0.0%	0.0%	82	6839	1258	72	263	15	1	14	6	0	0	0	0	2	8552
10/31/2019	1.2%	80.8%	14.1%	0.8%	2.7%	0.1%	0.0%	0.1%	0.0%	0.0%	0.0%	0.0%	0.0%	0.0%	100	6715	1168	70	227	9	1	7	4	0	0	0	1	4	8306
Total	1.1%	80.4%	14.3%	0.8%	3.0%	0.1%	0.0%	0.1%	0.0%	0.0%	0.0%	0.0%	0.0%	0.0%	277	20327	3626	215	759	33	3	29	11	4	0	0	2	10	25296

Class Data Summary

Bin #	1	2	3	4	5	6	7	8	9	10	11	12	13	14	Total Volume
Bin Class	Cycles	Cars + Trailer	2 Axle Long	Bus	2 Axle 6-Tire	3 Axle Single	4 Axle Single	4 Axle Double	5 Axle Double	>6 Axle Double	<6 Axle Multi	6 Axle Multi	>6 Axle Multi	Unclassified	Total Volume
Survey Total	277	20327	3626	215	759	33	3	29	11	4	0	0	2	10	25296
% Total	1.1%	80.4%	14.3%	0.8%	3.0%	0.1%	0.0%	0.1%	0.0%	0.0%	0.0%	0.0%	0.0%	0.0%	100%
Accumulated %	1.1%	81.5%	95.8%	96.6%	99.6%	99.8%	99.8%	99.9%	99.9%	100.0%	100.0%	100.0%	100.0%	100.0%	
Inv. Accum. %	98.9%	18.5%	4.2%	3.4%	0.4%	0.2%	0.2%	0.1%	0.1%	0.0%	0.0%	0.0%	0.0%	0.0%	



Classification Descriptions

Bin #	Bin Description
1	Motorcycles
2	Passenger cars, including those with recreational trailers
3	2-axle pick-ups, vans, and RVs, including those with recreational trailers
4	Buses
5	2-axle, 6-tire single units
6	3-axle single units
7	4-axle single units
8	3-axle or 4-axle double unit
9	5-axle double unit
10	6-, 7-, or 8-axle double unit
11	5-axle multiple unit
12	6-axle multiple unit
13	7-or-more-axle multiple unit
14	Vehicles that could not be classified

Site notes: